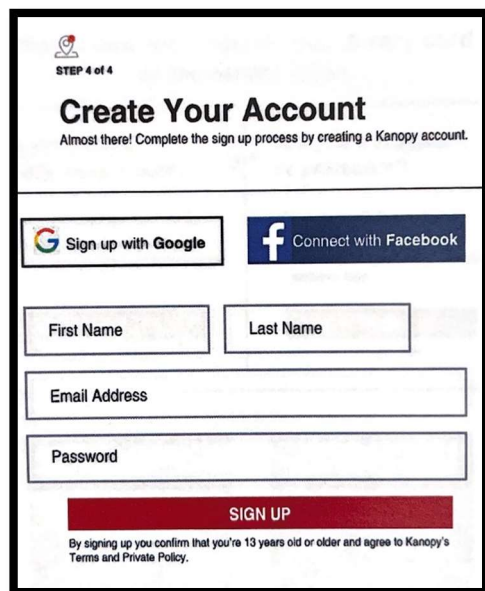


Complete this sign-up process by creating your Kanopy account in the fields provided. Your account can be created using your Google or Facebook login, or can be done directly on Kanopy using your email address and creating a new password. Your password will need to be at least six characters.



After creating your account, you'll receive a verification email in your inbox. Click on the link in this email to verify your email address.

You are ready to start watching! Click "Watch Now" on the welcome screen to start browsing.

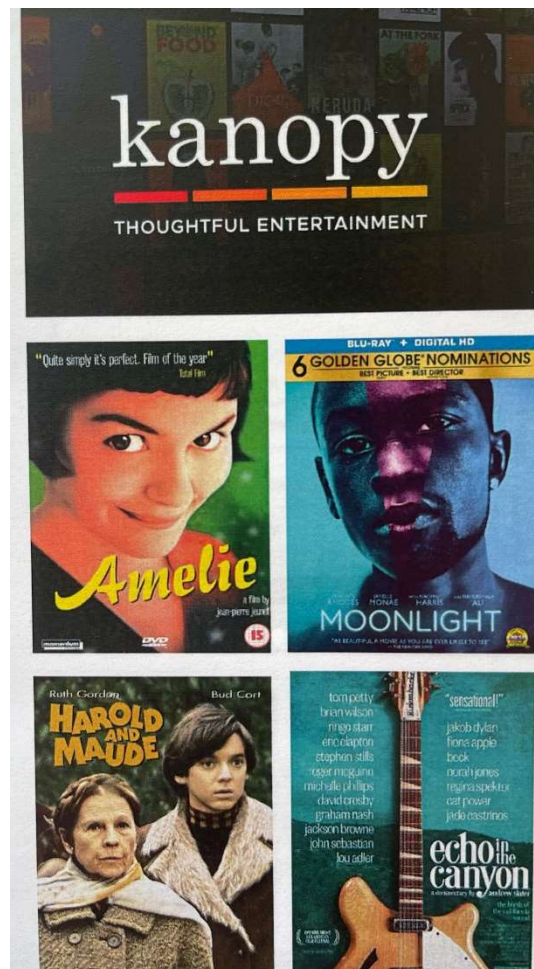
Download the Kanopy app from your device's app store to use Kanopy on a mobile device.



Each KML cardholder can check out ten Kanopy titles per month, subject to change.



32 North Main Street  
 P O Box 127  
 Kent, Connecticut 06757  
 (860) 927-3761 ■  
[www.kentmemoriallibrary.org](http://www.kentmemoriallibrary.org)  
 Email: [kmlinfo@biblio.org](mailto:kmlinfo@biblio.org)



View critically acclaimed movies, inspiring documentaries, award-winning foreign films, and more, with free Kanopy streaming. All you need is a KML library card.



Getting started with Kanopy is easy! Go to [www.kanopy.com/signup](http://www.kanopy.com/signup) and look for the “Do you have a library card?” option on this page. Click “Find Your Library” (see screen image below). Please note, a valid KML card is required for Kanopy use. If you have a card from another library, please ask your home library about Kanopy access.



Type “Kent Memorial Library” in the search field and select it from the list; or search for KML by city (Kent) or zip code (06757). A list of matching libraries will appear—choose Kent Memorial Library from the list or the map (see screen image below).

Having trouble adding your library card? You can review common errors when adding your library card information to your Kanopy account and general Kanopy questions at [kanopy.com](http://kanopy.com) – click “Support” at the bottom of the main page.

Enter your library card number, and if required, your library card password/PIN and click “Continue.”

